

Whitechapel Road, E1

- Prime location on busy Whitechapel Road E1
- Arranged over ground floor
- New 5-year lease available on completion
- Incoming leaseholder will be responsible for checking and paying business rates
- double-fronted restaurant
- £50,000 Premium
- Rent payable quarterly (every 3 months)
- Restaurant recently refurbished throughout – capacity for up to 100
- Excellent transport links
- 6-month deposit required

£11,666 Per month

Prime Commercial Restaurant Unit – Whitechapel Road, E1

We are delighted to present this rare opportunity to lease a commercial premises on the vibrant Whitechapel Road, E1. The property comprises a double-fronted restaurant offering excellent visibility and strong footfall in one of East London's most dynamic locations.

The Restaurant

Recently refurbished throughout to a high standard

Spacious double-fronted premises with excellent natural light and high ceilings

Capacity for up to 100 customers

Arranged over ground floor.

Suitable for a wide range of cuisines and F&B concepts

Location

Situated on Whitechapel Road, the property benefits from outstanding connectivity and a thriving local community.

A short walk to Whitechapel Station (Elizabeth Line, District, Hammersmith & City, and Overground) and Aldgate East Station

Easy access to the City of London, Shoreditch, and Canary Wharf

Bustling area with a mix of restaurants, cafes, independent retailers, and established national brands

Close proximity to Royal London Hospital and Queen Mary University, driving consistent trade and footfall

Lease Terms

A new 5-year lease will be granted upon completion

Rent payable quarterly (every 3 months)

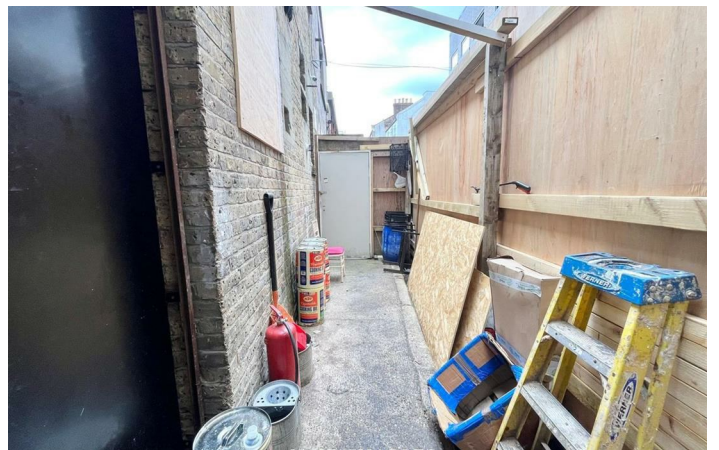
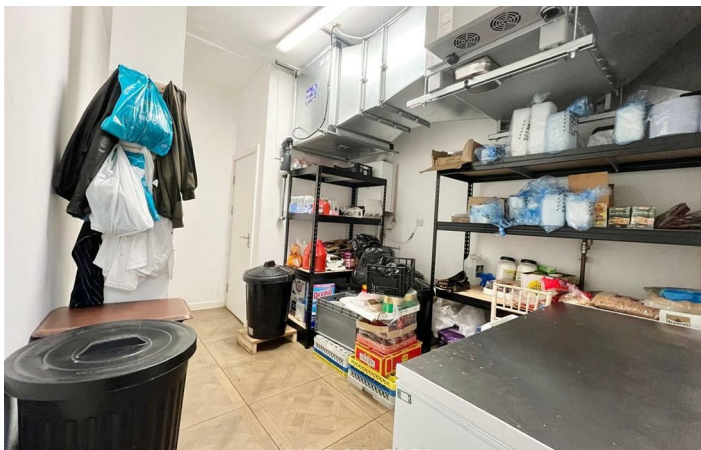
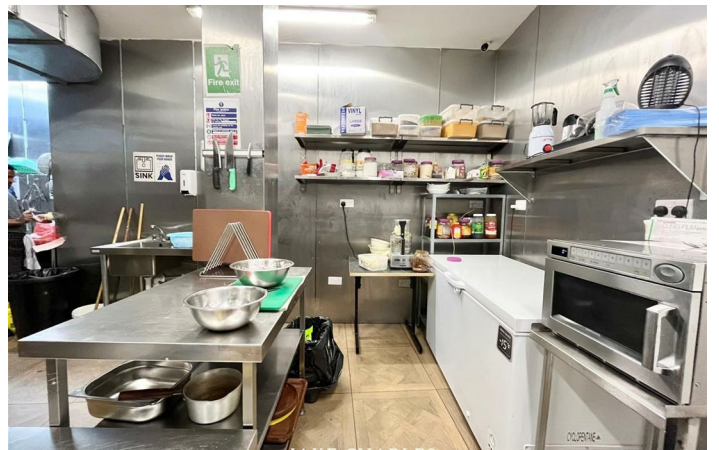
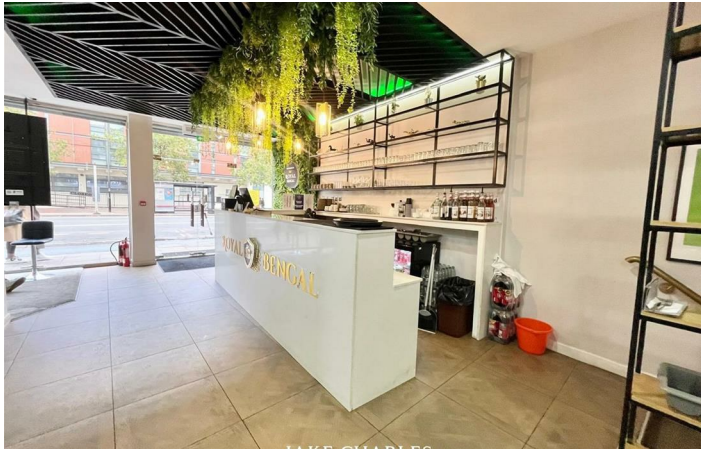
A 6-month deposit is required

Premium - £50,000

Commercial rent: £140,000 pa

Summary

This is a rare chance to acquire substantial commercial space in a high-demand location, ideal for established operators or ambitious new ventures seeking a strong trading position in East London.



Floor Plan

These particulars, whilst believed to be accurate are set out as a general outline only for guidance and do not constitute any part of an offer or contract. Intending purchasers should not rely on them as statements of representation of fact, but must satisfy themselves by inspection or otherwise as to their accuracy. No person in this firm's employment has the authority to make or give any representation or warranty in respect of the property.

